

# 360° Rotating Viewer

With Automatic Working Distance Compensation



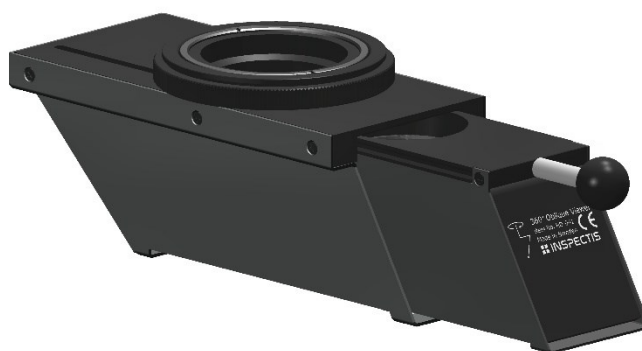
Quality of Inspection

360° rotating viewer for rotating the image at 32° oblique angle by manipulating the optical path without touching the object. Designed for side-view inspection of objects while both the digital microscope and the inspection object remain stationary.

Inspectis Rotating Viewer operates in both “side-view” and standard “right-angle-view” modes. Equipped with an optical lens to maintain the working distance in both operating modes without having to change the axial position of the camera.



Side-view mode



Right-angle-view mode

Compatible with all Inspectis Digital Microscopes.

## Specification:

Angle of View	32 degrees, all directions
Field of View	~ 58 mm (min. FoV is defined by maximum zoom of the lens)
Working Distance	75mm
Mount	M67x0.75mm, for mounting on the ring light
Size	162(L) x 65(W) x 63(H) mm (at oblique view mode) 215(L) x 65(W) x 63(H) mm (at right-angle view mode)
Weight	620 g.
Operating / Storage Environment	0° – +55°C, 20 - 85% RH, non-condensing -20° – +65°C, 20 - 90% RH, non-condensing

## Order Numbers:

**HD-041** Inspectis 360 degrees Rotating Viewer

Reseller:



V1, 2025

[www.inspectis.com](http://www.inspectis.com)